



Thank you for auditioning for

RENT 25TH ANNIVERSARY FAREWELL TOUR

ROLE: MARK

Initial Call please prepare:

1. "What You Own," OR "Halloween", and "Will I."
2. 16-bars of a pop/rock song. Absolutely no musical theatre!

If you are called back please prepare the FULL audition packet sides and music.

Thanks so much!

W | S Casting

wojcik | **seay** casting, llc

247 west 38th street, 10th floor, nyc ny 10018 p: 212.929.2339 f: 212.869.4707 wscastingonline.com

START HERE WITH THIS LINE: *Vamp*

28 29 30

"OH MY GOD, WHAT AM I DOING"

A2/G *A2*

31 32 33

SOUNDS 8V6 VERSE

DON'T BREATHE TO DEEP DON'T THINK ALL DAY

+Gtr II *A2* *A2/G*

34 35 36

DIVE IN - TO WORK

A2

37 38 39

DRIVE THE OTH-ER WAY THAT DRIP OF HURT

A2/G *C#m*

40

8

41 42 43

THAT PINT OF SHAME GOES A-WAY JUST

D C#m E C#m

44

8

45 46

PLAY THE GAME YOU'RE LIV-ING IN A-

D G E

47

8

48 49

ME- RI- CA AT THE END OF THE MIL- LE- NI- UM

A2 F#m E

CHORUS

50

8

51 52

YOU'RE LIV-ING IN A- ME- RI- CA LEAVE YOUR CON-SCIENCE AT

D A2 F#m

53 THE TONE — 54 AND WHEN YOU'RE LIV-ING IN A —

55 ME- RI- CA 56 AT THE END OF THE MIL-

57 LE- NI- UM 58 59



60 61 62 *SOUNDS B V 6*

YOU'RE WHAT YOU OWN

E A2

(63) VERSE

FILM MAK-ER CAN-NOT SEE

AND THE SONG WRIT-ER CAN-NOT HEAR

PLAY AT 79

A2 A2/G

33000 →

66 67 68

YET I SEE MI- EV- 'RY WHERE

AN-GE'LS

A2

HALLOWEEN

1 *Vamp* 2 3 *ON CUE* 4

Gtr II we *GTR I we*
Fm

(5) 6 7 8 3

HOW DID WE GET HERE? HOW THE HELL? DAN LEFT CLOSE ON THE

Gtr II Fm

9 10 11 12

SLEE- PLÉ OF THE CHURCH

Db Fm

(13)

14 15 16

HOW DID I GET HERE? _ HOW THE HELL? _ CHRIST-MAS!

mp PLAY STRINGS
Db/F Eb/G Ab sus Ab

+ 35 →

17 18 19 20

CHRIST-MAS EVE LAST YEAR _ HOW COULD A

Db/F Eb/G Ab sus Ab *mf*

21 22 23 24

NIGHT SO FRO-ZEN BE SO SCALD-ING HOT? HOW CAN A

Db/F Eb/G Ab sus Ab

25 26 27 28

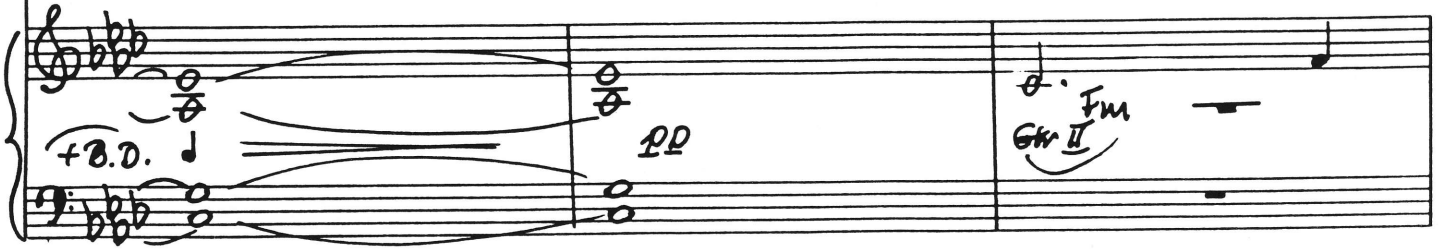
MORN-ING_ THIS MILD BE SO RAW?

Db/F Eb/G Fm

29



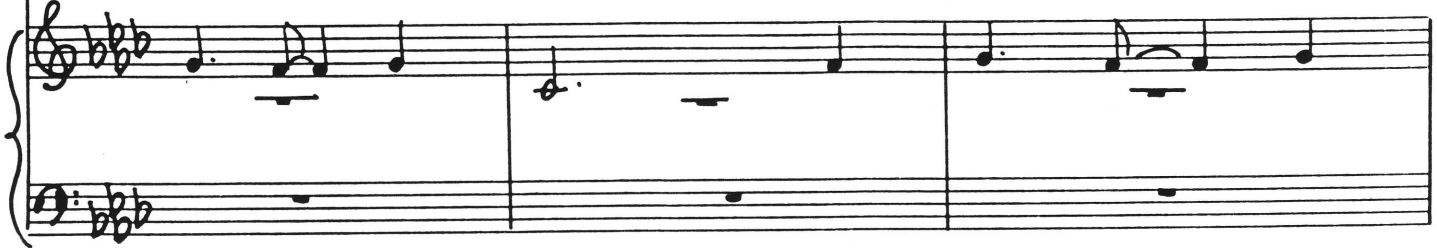
WHY ARE EN-TI-RE YEARS STREWN ON THE CUTTING ROOM FLOOR OF ME-MO-RY



32



WHEN SIN-GLE FRAMES FROM ONE MAG-IC NIGHT FOR-



35



EV-ER FLICK-ER IN CLOSE UP ON THE 3 D I-MAX OF MY



39



MIND THAT'S PO-ET-IC THAT'S PA-THE-TIC WHY DID



(A3)

44 45 46

MI-MI KNOCK ON RO-GER'S DOOR? - AND COLLINS CHOOSE THAT PHONE BOOTH BACK WHERE

+ H.H. Db/F Eb/G Ab sus

+ Bass

47 48 49 50

AN-GE L SET UP HIS DRUMS? WHY DID MAU-REEN'S E-QUIP-MENT BREAK DOWN? WHY AM I -

Db/F Eb/G Ab

51 52 53 54

- THE WIT- NESS? AND WHEN I CAP-TURE IT - ON FILM WILL IT

Db/F C/E B/Eb Bb/D

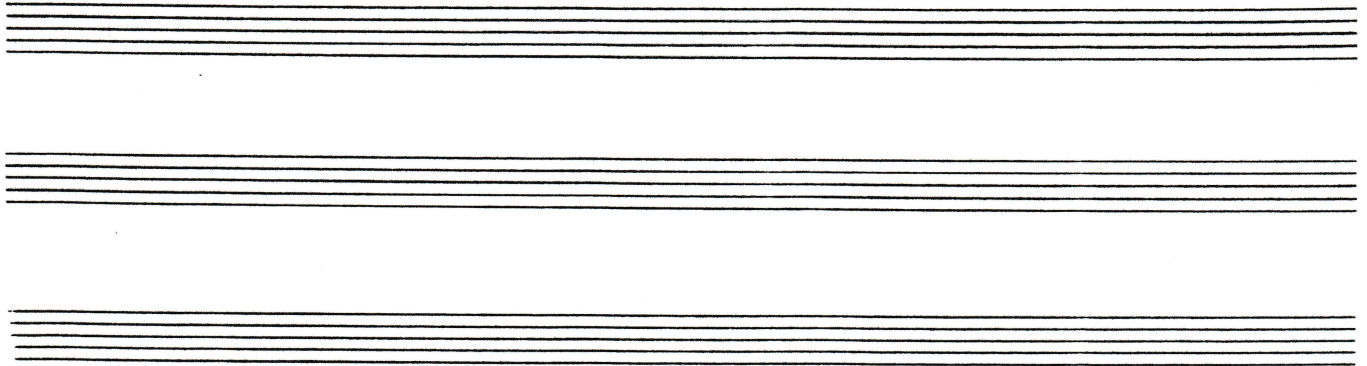
55 56 57 58

MEAN THAT IT'S - THE END AND I'M A - LONE?

A/Db Ab/C C2 sus

SÉGUÉ

WILL I



A

~~PLAY AT # 29 I'M WRITING GREAT SONGS BEFORE I...~~

~~B~~

(1)

2 3 4

GTR solo

G Cb2 Gb Cb2 Ebm Db

5

6 7 8

WILL I LOSE MY DIG- NI- TY?_ WILL SOME-ONE CARE?_

Cb2 Gb Cb2 Ebm Db

Hold for 8 counts

9

WILL I WAKE TO-MOR-RON FROM THIS NIGHT- MA-RE?

Chords: Cb2, Gb, Cb2, Ebm, Db

13

STOP

WILL I LOSE MY DIG NI TY? WILL SOME ONE CARE?

Chords: Cb2, Gb/Bb, Cb2, Ebm, Db

MP $\sqrt{K6c II}$ CHURCH ORGAN

+ Bs

17

WILL I WAKE TO-MOR-RON FROM THIS NIGHT- MA-RE?

Chords: Cb2, Gb/Bb, Cb2, Ebm, Db

HOLD FOR 8 COUNTS

MARK opening monologue

MARK

We begin on Christmas Eve with me Mark, and my roommate Roger. We live in an industrial loft on the corner of 11th Street and Avenue B. It's the top floor of what was once a music publishing factory. Old rock and roll posters hang on the walls. They have Roger's picture advertising gigs at CBGB'S and the Pyramid Club. We have an illegal wood-burning stove; its exhaust pipe crawls up to a skylight. All of our electrical appliances are plugged into one thick extension cord, which snakes its way out a window. Outside a small tent city has sprung up in the lot next to our building. Inside it's freezing because we have no heat.

(HE turns the camera to ROGER)

Smile!